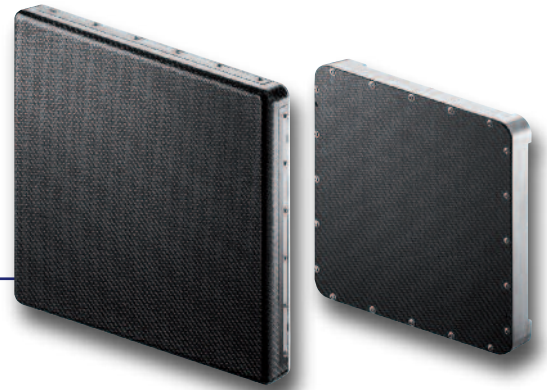


THE BEST SOLUTION FOR YOUR C-ARM

- ▶ Pixium® 2121 & 3030 are two dynamic flat panel detectors for equipment such as mobile and fixed c-arms, Cathlab, fixed interventional rooms and Cone Beam CT machines.
- ▶ The new generation detectors, Pixium® 2121 & Pixium® 3030 operate in different modes to support all 2D and 3D applications, whether orthopaedic, urologic, cardiac, vascular or neurological.
- ▶ The CMOS version of Pixium 2121, backward compatible with the aSi version brings further critical advantages in regards to greater dose reduction at low dose and sensitivity levels.
- ▶ Systems fitted with Pixium® 2121 & 3030 detectors deliver high image quality.

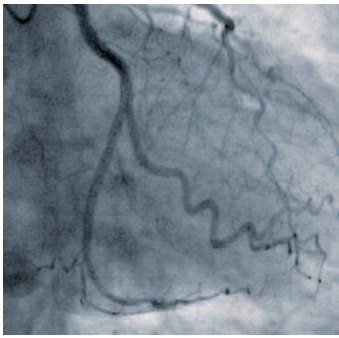


DIGITAL FLUOROSCOPY

Pixium® 2121 & 3030

A true alternative to conventional image chain for your equipment





DIGITAL FLUOROSCOPY

Pixium® 2121 & 3030

Multi-application, with dedicated operating modes

Flat Panel characteristics.	Pixium® Surgical 2121S-A	Pixium® Surgical 2121S-C (WIP)	Pixium® Surgical 3030S-A	Unit
technology	aSi	CMOS	aSi	
Pixel pitch	154			µm
X-ray sensitive area	207 x 207		301 x 301	mm (V x H)
	1344 x 1344		1956 x 1956	pixels
AD conversion	16			bits
X-ray generator voltage range	40 -150			kV
Maximum frame rate (full image, 1x1)	25	30	13	fps
Maximum frame rate (full image, 2x2)	30	60	30	fps
DQE@ 0 lp/mm, RQA 5, 20 n Gy	76	77	75	%
DQE@ 2 lp/mm, RQA 5, 20 n Gy	33	46	30	%
Detector dimensions	283 x 288 x 78.5		380 x 380 x 78.5	mm
Detector weight	8.7		12.9	kg
Detector max power consumption	14	11	15	W
Cooling	Passive cooling			

© 2018 Trixell - Photos: iStock - This document cannot be considered to be a contractual specification. The information given herein may be modified without notice.

TRIXELL

460, rue de Pommarin - Z.A. Centr'Alp - 38430 Moirans - France
 Tel.: + 33 4 76 57 41 00 - Fax: + 33 4 76 57 40 48