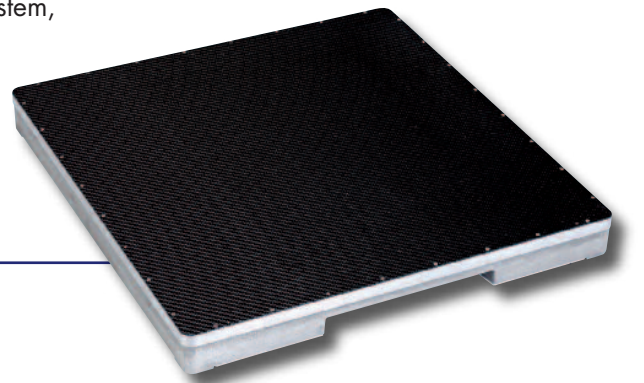


MULTIPURPOSE, LARGE-FORMAT DIGITAL X-RAY DETECTOR

▶ Based on a flat-panel digital detector with the largest field-of-view in the market, the Pixium 4343 FL is designed for easy integration in classical R&F tables. It allows manufacturers to offer radiologists an all-digital real-time system, generating high-quality images for both routine dynamic applications and high-end static ones.

▶ Digital technology facilitates the work of X-ray technicians and speeds up the process, allowing medical centers to optimize patient throughput.

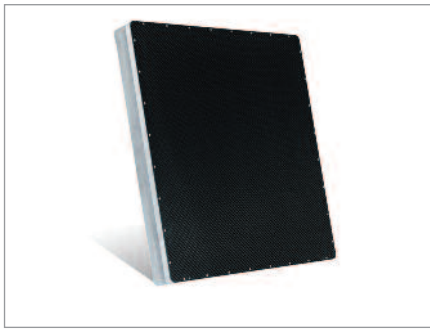


DIGITAL RADIO-FLUOROSCOPY

Pixium 4343 FL

Universal value detector for easy transition to digital





DIGITAL RADIOGRAPHY

Pixium 4343 FL

Quality, reliability, versatility

UNIVERSAL: A SINGLE DETECTOR FOR BOTH RADIOGRAPHY AND FLUOROSCOPY

Integrated in R&F tables, the Pixium 4343 FL allows radiologists to perform X-ray exams (bones, lungs), positioning or to carry out routine fluoroscopic exams (arthroscopy, barium swallow, gastrointestinal, musculoskeletal, etc.). The Pixium detector delivers a higher quality all-digital image for each type of application.

REAL-TIME, COST EFFECTIVE AND LOW-DOSE DETECTOR

Our new detector is your cost-effective solution which allows you an easy transition to digital. This solution provides you with high quality images and optimized patient throughput.

LARGEST FIELD-OF-VIEW IN THE MARKET

Thanks to its 17"x17" size, the Pixium 4343 FL offers the largest coverage area in the market. This means that it can easily be used for lung and pelvic exams.

TOP-QUALITY DIGITAL IMAGES FOR ENHANCED DIAGNOSIS

The Pixium 4343 FL detector is based on the clinically proven Pixium® Csl scintillator, which offers outstanding X-ray absorption, reducing exposure to the patient while ensuring high-quality images. It combines high detection quantum efficiency (DQE) with a large number of pixels and high dynamic range (16 bits), revealing even the slightest anatomical detail for a high-precision diagnosis.

TECHNICAL SPECIFICATIONS

Scintillator	Pixium® Csl
Pixel size	148 µm
X-ray sensitive array	17 x 17 inch
	43 x 43 cm
	2874 x 2840 pixels
X-ray exposure dose	0.2 to 3 µGy
Maximum X-ray dose	85 µGy
Maximum linear dose (radiological mode)	50 µGy
X-ray generator voltage range	40 to 150 kVp
DQE @ 0 lp/mm	65 % typ. at 2 µG RQA5
MTF @ 1 lp/mm	63 % typ.
MTF @ 2 lp/mm	32 % typ.
Lag (1st frame)	< 1 %
Lag (2nd frame)	< 0.5 %
AD conversion	16 bits
Number of modes	18 (6 RAD, 12 fluoroscopy)
Interfaces	
Image	Camera Link & LVDS Parallel
Communication	Ethernet
DC input power	24 V
Mechanical characteristics	
Detector dimensions	500 x 490 x 45.5 mm
Detector weight	14 kg max

TRIXELL

460, rue de Pommarin - Z.A. Centr'Alp - 38430 Moirans - France
Tel.: + 33 4 76 57 41 00 - Fax: + 33 4 76 57 40 48